

M&E

SUPPLIES



Fire Safety

EQUIPMENT

CATALOGUE

For the full range of products please scan the QR Code

www.mesupplies.com



About

We at **M&E Supplies** constantly strive to offer the best choice of quality branded products at competitive prices with service levels to none. As the leading "**ONE STOP SHOP**" for industrial supplies, giving innovative solutions to modern business.

So whether its site surveys, technical help and advice, full e-commerce expertise, full supply chain management, or complete deliveries on time, **M&E Supplies** can provide the answer.

If you would like to know more, contact us now at **01-6283888**.

M&E Supplies specializes in safety equipment and safety products for the workplace. Our prices on, and more, are competitively priced and lower than most safety equipment and safety product suppliers.

We stock brand name safety products in these categories:

Protective Footwear, Hand Protection, Eye, Face, and Head Protection, Prescription Eye wear, Respiratory Products, Hearing Protection and Conservation, Instrumentation, Fall Arrest, Eye & Face Protection, Head Protection, Hearing Products, Respiratory Protection, Instrumentation & Monitors, Confined Space Equipment, Fall Protection, Protective Clothing, Footwear & Accessories, Hand Protection, Ergonomic Products, First Aid Products, Emergency Shower / Eyewash, Skin Care Products, Lockout/Tagout, Storage & Handling, Spill Control, Facilities Safety & Traffic Control and much more.

We're committed to bringing you the widest choice of quality business products at rock bottom prices.

Every day, we check our prices against more than 20 of our competitors to ensure they're amongst the most competitive around... so you don't have to.

We're lowering prices every day!

M&E Supplies has built it's reputation on the quality of it's products and services, which our customers have come to expect. Our aim is to not only maintain this reputation, but to build on it.

CONTENT

Water Stored Pressure	04
Foam Stored Pressure	05
Dry Powder Stored Pressure	06
Carbon Dioxide	07
Hose Reel Cabinets	08
Hose Reel Ancillaries	09
Fire Blankets	12
Stands	13
Cabinets	16
Covers	20
Riser Equipment	21
Instantaneous Adaptors	22
Brigade Equipment	24
Mounting Brackets	28
Tools and Maintenance	30
Escape Equipment	31
Extinguisher Spares	33
Audible Alarms	34
Safety Ancillaries	36
Emergency Lighting	37



How to Find Us

Address: Lower Lucan Road, Hills Ind. Est.,
Lucan, Co. Dublin, K78NH02
Ireland

Telephone: +353 (0)1 6283888
Tiernach 0863212915
Robert 0863760011 / Niall 0861234074

Fax: Fax: +353 (0)1 628 2999

Web: www.mesupplies.com
sales@mesupplies.com

Disclaimer

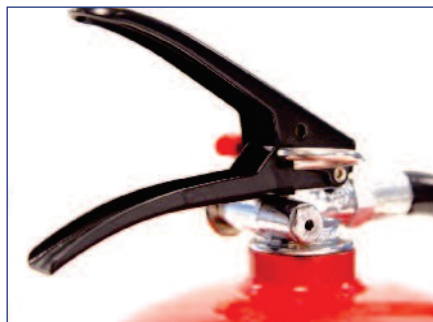
The contents and information contained in this brochure are intended for general marketing purposes only. **M&E Supplies** reserves the right to alter specifications and designs without prior notice. All weights are an approximate figure rounded to the nearest second decimal place.

Water Stored Pressure

Used against A class fires, water extinguishers are commonly used in areas such as storage for dry goods and hotel communal areas.

Features:

- Quality valves.
- Passed the 35kv conductivity of discharge test.
- Squeeze grip design for enhanced discharge control.
- Safety relief valves.
- Internal PE lining up to sealing point, no internal threads exposed to liquids to stop corrosion.
- Large diameter neck rings for easy inspection.
- Full epoxy polyester coated steel shell for high corrosion protection.
- Protective plastic bases.
- Ergonomically designed discharge nozzles.
- Impact resistant pressure gauges.
- Comes supplied with wall bracket.
- High fire ratings.



MODEL	PRODUCT CODE	L	RATING	♥	CE	⊙	35Kv DIELECTRIC-TEST
MW60E	02130216	6	13A	✓	✓	✓	✓
MW90E	02130219	9	21A	✓	✓	✓	✓
MW90	02130019	9	21A	✓	✓	✓	✓

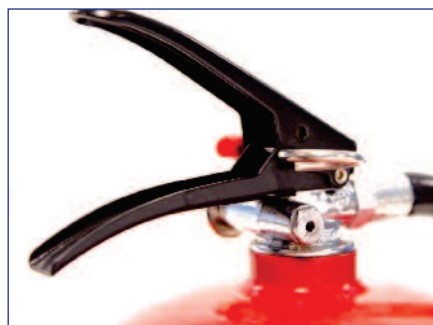


Foam Stored Pressure

Aimed at A and B class fires, the superior Aqueous Film Forming foam extinguishers are well suited to tackle liquid fires such as oil based fuels, paints and solvents. Ideal for offices, schools and flammable liquid stores. All this, without any environmental compromise.

Features:

- High Fire Ratings.
- Passed the 35kV conductivity of discharge test.
- Stichting Milieukeur approval (Netherlands environmental certification).
- Squeeze grip design for enhanced discharge control.
- Comes supplied with wall bracket.
- Internal PE lining up to sealing point, no internal threads exposed to liquids to stop corrosion.
- Protective plastic bases (except MF20 model).
- Quality valves.
- Safety relief valves.
- Ergonomically designed discharge nozzles.
- Unique spray nozzle gives optimal droplet size for enhanced cooling and performance.
- Impact resistant pressure gauges.
- Large diameter neck rings for easy inspection.
- Full epoxy polyester coated steel shell for high corrosion protection.



MODEL	PRODUCT CODE	L	RATING	⚡	CE	⚙️	🏆	35kV DIELECTRIC TEST
MF20	02130002	2	8A/55B	✓	✓	X	✓	✓
MF30	02130003	3	13A/70B	✓	✓	X	✓	✓
MF60E	02130206	6	13A/144B	✓	✓	✓	✓	✓
MF60	02130006	6	21A/183B	✓	✓	✓	✓	✓
MF90	02130009	9	21A/233B	✓	✓	✓	✓	✓

Dry Powder Stored Pressure

Our dry powder models offer the widest protection available, suitable for A, B and C class fires. A great all rounder suited to both industry and home.

Features:

- Quality valves.
- High fire ratings.
- Squeeze grip design for enhanced discharge control.
- Safety relief valves.
- Protective plastic bases (except MP1, MP2 and Mp3).
- Full epoxy polyester coated steel shell for high corrosion protection.
- Ergonomically designed discharge nozzles.
- Impact resistant pressure gauges.
- Large diameter neck rings for easy inspection.
- Safe to use on live electrical equipment.
- 1kg, 2 kg and 3kg include a robust transport bracket.
- 4kg, 6kg, 9kg and 12kg come supplied with wall bracket.



MODEL	PRODUCT CODE	KG	RATING	♥	CE	Ⓢ
MP1	02110001	1	8A/34B	✓	✓	✗
MP2	02110002	2	13A/70B	✓	✓	✓
MP3	02110003	3	21A/113B	✓	✓	✗
MP4	02110004	4	21A/113B	✓	✓	✗
MP6E	02110206	6	27A/183B	✓	✓	✓
MP9E	02110209	9	43A/233B	✓	✓	✓
MP6	02110006	6	34A/183B	✓	✓	✓
MP9	02110009	9	43A/233B	✓	✓	✓
MP12	02110012	12	55A/233B	✓	✓	✓



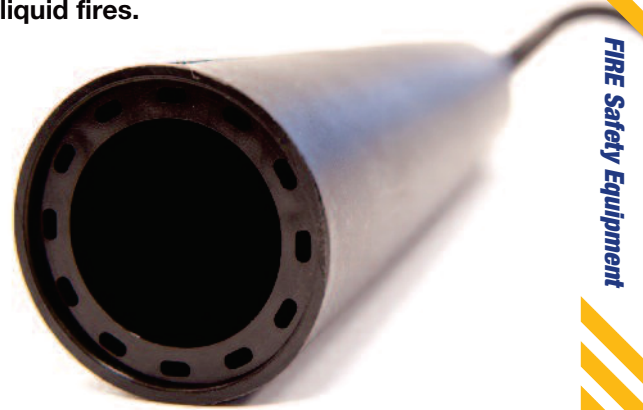


Carbon Dioxide

Unique in its application CO2 is best suited to electrical risks and liquid fires. Ideal for the modern world as it does not damage or contaminate electrical equipment. CO2 has stood the test of time and is the obvious choice for electrical risks. Two ranges available both aluminium and lightweight alloy steel.

Features:

- Quality valves.
- High fire ratings.
- Squeeze grip design for enhanced discharge control.
- Compact horn design on 5kg, does not cause obstruction.
- 2kg model comes supplied with insulated horn.
- Safety relief valves.
- Full epoxy polyester coated cylinder for high corrosion protection.
- Ergonomic design.
- Stichting Milleukeur approval (Netherlands environmental certification) on aluminium models.
- Safe use on live electrical equipment.
- Comes supplied with wall bracket.



FIRE Safety Equipment



MODEL	PRODUCT CODE	KG	RATING	♥	CE	⊕	⊙
MC2A	02140002	2	55B	✓	✓	✓	✓
MC5A	02140005	5	89B	✓	✓	✓	✓
MC2E	02140802	2	55B	✓	✓	✓	X
MC5E	02140805	5	89B	✓	✓	✓	X

Hose Reel Cabinets

Made from thick galvanised steel sheet (optional stainless steel). The cabinet is prepared for painting by using a state of the art ultrasonic technology which ensures perfect adhesion of the of epoxy-polyester powder coating to at least 80µm thickness.

3 LOCK TYPES AVAILABLE



Euro



Plastic Paddle



Yale

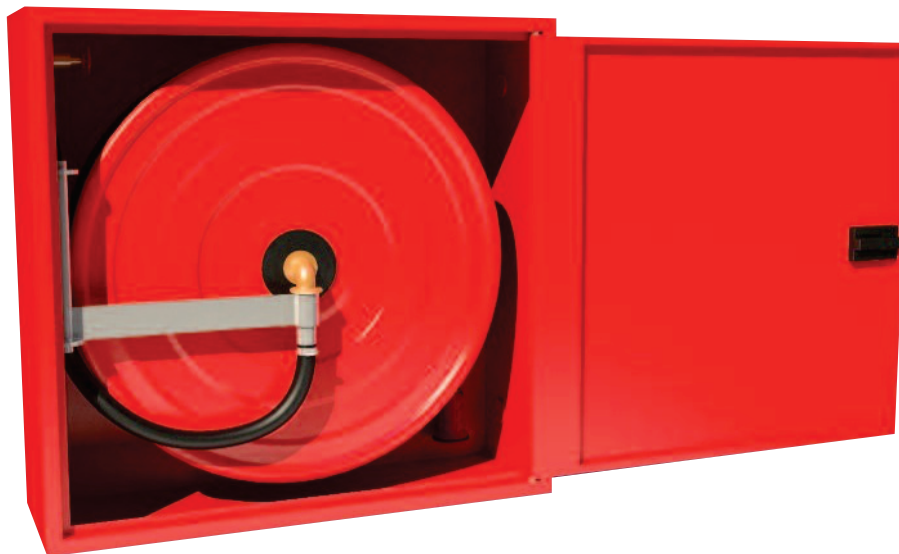
2 MOUNTING VERSIONS



Recessed



Surface mounted



DOOR FEATURES



Flush fitting door



Door can be fitted to open either way

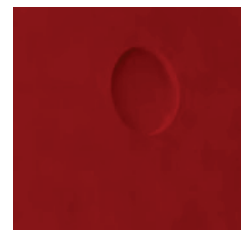


Off set hinge, allows for 180° opening

PRE-STAMPED



Pre-stamped water way access





Hose Reel Ancillaries

LIGHT WEIGHT U.V RESISTANT FIRE HOSE

Semi-rigid fire hose complies with BS 694:2001.

Product codes:

19mm x 30mm: 24100125

25mm x 30mm: 24100135



FLEXI-CONNECTORS

Used to connect the hose reel to the mains supply. Two lengths of flexi-connectors are available.

Product codes:

400mm: 20210101

800mm: 20210102



25MM LEVER BALL VALVES

Hose reel isolation valve.

Product code: 20010702



LOCKSHIELD VALVE

1" BSP.

Product code: 06050011

Spare key: 06050012



Hose Reel Ancillaries

PRESSURE REDUCING VALVE

Automatically adjusts the mains water pressure before the hose reel. 1" BSP.

Product code: 06050008



DOVE TAIL BRACKET

Zinc plated steel bracket, used to fix hose reels to walls.

Product code: 20010601



SWINGING ARM BRACKET

Product code: 20010301



BEADED HOSE GUIDES

Product code: 20010602



HOSE REEL PEDESTAL STAND

Manufactured from mild steel, etch primed and then finished in black wet lustre paint, the pedestal stand is an ideal way to floor mount hose reels.

Product codes:

Fixed pedestal stand: 98010711

Swinging pedestal stand: 98010714





Hose Reel Ancillaries

PLASTIC TWIST JET/SPRAY NOZZLE

Available in 19mm or 25mm.

19mm product code: **23110404**

25mm product code: **23110402**



CHROMED LEVER JET SPRAY NOZZLE

Chromed lever jet spray nozzle available in 19mm or 25mm.

19mm product code: **23110201**

25mm product code: **23110202**



BRASS CENTRED EURO NOZZLE

Grip twist brass nozzle available in 12mm, 19mm or 25mm.

12mm product code: **23110101**

19mm product code: **23110102**

25mm product code: **23110103**



PLASTIC EURO NOZZLE

Plastic euro nozzle available in 19mm.

19mm product code: **23110404**



ADVANCED NOZZLE

Available in 19mm or 25mm.

19mm product code: **23110301**

25mm product code: **23110302**



Fire Blankets

All of our fire blankets are certified to BS EN1869. Models feature a capsule design which protects the blanket from exposure to contaminants such as grease. Ideal for both kitchen and clothing fires. Compact and strong with quality silicon coated material for enhanced performance.

Features:

- Compact one piece box.
- Hinged flap to allow quick release of blanket.
- Quality heavy silicon coated material.
- Kitemarked to BS En1869.
- Fire Resistant pull tabs.
- Available in hard or soft cases.



PRODUCT CODE	SIZE	📌
04001010	1m x 1m	✓
04001212	1.2m x 1.2m	✓
04001812	1.2m x 1.8m	✓
04001818	1.8m x 1.8m	✓



Stands

Steel Tubular Extinguisher Stands:

- Strong, one piece construction.
- Lightweight, easy to install, easy to move.
- Suitable for all extinguisher types, can be fitted with either CO2 or J bracket.



Product codes:

Single black stand: 03020110
Double black stand: 03020210



Product codes:

Single chrome stand: 03020109
Double chrome stand: 03020209



Product codes:

Single red stand: 03020111
Double red stand: 03020208



Sign Holder for Steel Stands

These sign holders are designed to be used with the steel stands, they are pre-drilled to be fitted behind the extinguisher bracket and are finished to match the stands.

Product codes:

Chrome: 98010712
Black: 98010721

We can offer a wide range of stands from attractive polished chrome to highly visible red polyethylene.

Stands

Extinguisher Stands:

Rotationally Moulded:

- Made from tough, high impact and chemically resistant plastic.
- Highly visible.
- No metal parts, no corrosion.
- Lightweight, easy to install, easy to move.
- Suitable for all extinguisher types.

Extinguisher Plinth:

- Made from high impact resistant material.
- High gloss finish.
- Suitable for all extinguisher types.



Product code:
Single Plastic stand: 03010105



Product code:
Single Plastic stand: 03010208



Product code:
Double plastic stand: 03010207



Product code:
Double plastic stand: 03010205



Product code:
Double extinguisher plinth: 03010108



Stands



Contractors fire point stand

This fire point stand ensures that fire equipment is held in an easy-to-see location.

- It holds up to 3 fire extinguishers and there is room on the back board for information or fire signs, rotary bell or even a first aid kit.

Product code: 14030001

Mobile fire points

Our mobile fire points are extremely robust. Made from mild steel painted red.

- Designed to be able to hold 2 of all types of extinguishers. There is also room for a rotary bell (holes are pre-drilled for ease of fitting) and a fire bucket (extinguishers, bucket & bell supplied separately).

Product code: 14010502



Cabinets

Steel Extinguisher Cabinets

Features:

- Made from 1.2mm CR4 steel.
- Cabinets are available in red or white epoxy polyester coating (optional stainless steel).
- 3 different lock types are available:
 - Euro, plastic paddle latch and Yale lock.



STYLE/FINISH	PRODUCT CODE	WIDTH	DEPTH	HEIGHT
SINGLE RED	03110408	300mm	220mm	730mm
SINGLE STAINLESS	03110409	300mm	220mm	730mm
DOUBLE RED	03110401	600mm	220mm	730mm
DOUBLE STAINLESS	03120102	600mm	220mm	730mm

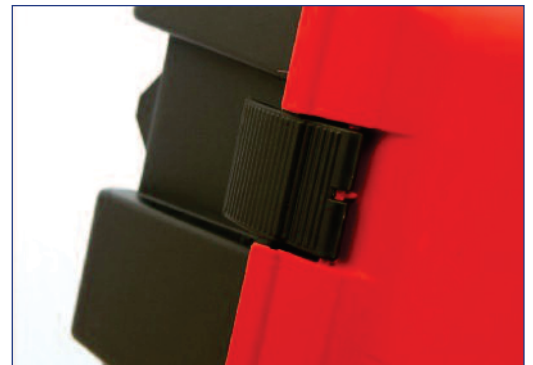


Cabinets

Single Fire Extinguisher Cabinets

Features:

- Made from high impact resistant plastic.
- Wall, floor, post or vehicle mounting.
- Ideal for indoor or outdoor use.
- Weatherproof seal.
- 3 different sizes to suit all extinguishers.
- Highly visible front door.
- Clear vision panels in door.
- Retaining straps to secure extinguishers in place.



PRODUCT CODE	INTERNAL HEIGHT	INTERNAL WIDTH	INTERNAL DEPTH	EXTERNAL HEIGHT	EXTERNAL WIDTH	EXTERNAL DEPTH
03010101	565mm	210mm	210mm	650mm	315mm	280mm
03010102	680mm	220mm	220mm	700mm	340mm	265mm
03010103	740mm	200mm	200mm	840mm	280mm	260mm

Cabinets

Double Fire Extinguisher Cabinets

Features:

- Made from high impact resistant plastic.
- Wall, floor, post or vehicle mounting.
- Ideal for indoor or outdoor use.
- Weatherproof seal.
- 2 different sizes to suit all extinguishers.
- Highly visible front door.
- Clear vision panels in door.
- Retaining straps to secure extinguishers in place.



PRODUCT CODE	INTERNAL HEIGHT	INTERNAL WIDTH	INTERNAL DEPTH	EXTERNAL HEIGHT	EXTERNAL WIDTH	EXTERNAL DEPTH
03010201	650mm	530mm	210mm	720mm	585mm	270mm
03010203	760mm	530mm	300mm	850mm	565mm	375mm



Cabinets

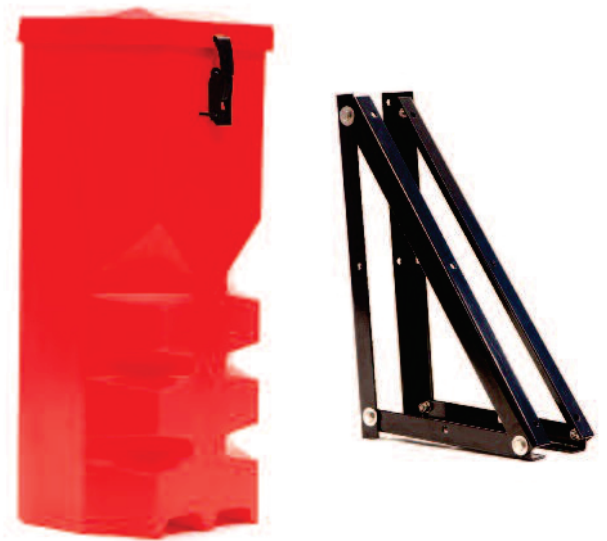
Vehicle Cabinets

Features:

- Made from high impact resistant plastic.
- Truck or trailer mounting (fixing kit available).
- Internal strap to secure extinguisher.
- Waterproof seal.
- Double skinned lid.
- 3 sizes available to suit all extinguishers.

Product codes:

- Small:** 03010301
- Medium:** 03010302
- Large:** 03010303
- Fixing kit:** 09010701



Fire Document Cabinet

- Highly visible colouring.
- Lockable door.
- Steel or plastic version available.



Product code: 03110701



Product code: 03110703

Covers

Wheeled Extinguisher Covers

Large PVC covers for protecting wheeled extinguishers. Quick, easy to fit and don't need to be removed to manoeuvre.

Product code: 10010502



PVC Hose Reel Covers

Designed to fit most 19mm and 25mm hose reels, these hose reel covers are quick and easy to fit, providing ideal protection in harsh environments.

Product code: 10010505

PVC Extinguishers Covers

These eye catching red and black PVC covers are an economical way of protecting your fire extinguishers.

- They have a clear vision panel for easy extinguisher identification and split back for quick removal.

Product code: 10010504





Riser Equipment

2 1/2 " OUTLET SEALS

Spare rubber washers for instantaneous couplings, landing valves or standpipes. Conforms to BS 336: 2010.

Product code: 06080001



2 1/2" INSTANTANEOUS BLANKING CAPS & PLUGS

Used to seal off water supplies and stop dirt entering landing valves or connections.

Product codes:

Aluminium blanking plug: 06040003

Plastic blanking plug: 06040002

Female blanking cap: 06040001



PADLOCK & STRAP

Used to stop unauthorised access to landing valves.

Product codes:

Padlock: 06040005

Leather strap: 06040006



GUNMETAL INSTANTANEOUS PLUG WITH PRESSURE GAUGE

Used for static pressure testing.

Product code: 06050010



Instantaneous Adaptors

MALE INSTANTANEOUS X 19/25MM HOSE TAIL

Quickly converts a 65mm female instantaneous coupling down to a 19 or 25mm fitting. Made from gun metal.

Product code: 06070001



MALE INSTANTANEOUS X 19MM HOSE TAIL

Quickly converts a 65mm female instantaneous coupling down to a 19mm hose tail. Made from aluminium.

Product code: 06070003



2 1/2 " BSP MALE X FEMALE INSTANTANEOUS

Product code: 06090001



2 1/2 " BSP MALE X MALE INSTANTANEOUS

Product code: 06090002



2 1/2 " BSP FEMALE X FEMALE INSTANTANEOUS

Product code: 06090003





Instantaneous Adaptors

2 1/2 " BSP FEMALE X MALE INSTANTANEOUS

Product code: 06090004



2 " BSP MALE X MALE INSTANTANEOUS

Product code: 06090005



2 " BSP MALE X FEMALE INSTANTANEOUS

Product code: 06090006



2 " BSP FEMALE X MALE INSTANTANEOUS

Product code: 06090007



2 " BSP FEMALE X FEMALE INSTANTANEOUS

Product code: 06090008



Brigade Equipment

STANDPIPES

- Made from aluminium alloy to BSEN 755.
- Heads able to rotate through 360°.
- Fitted with a plastic blanking cap.
- Inlet to suit hydrant BS 750.

Product codes:

Single headed: 06010001

Double headed: 06010002

Single headed c/w non-return valve: 06010101

Instantaneous type: 06010301

600mm extension piece: 06010600

Single headed bayonet: 06010201

Double headed bayonet: 06010102



HYDRANT KEY & BAR

- Made from aluminium alloy to BSEN 755. Key fits inside bar for easy storage.

Product codes:

Key & bar: 06020001

600mm extension piece: 06010601



COUPLINGS

- 65mm Instantaneous couplings are available with various sizes of hose tails. Made to BS 336.

Product codes:

65mm Aluminium: 98010901

65mm Gun metal: 98010902

45mm Aluminium: 98010903

45mm Gun metal: 98010905

38mm Aluminium: 98010908

38mm Gun metal: 98010907





Brigade Equipment

CONTRACTORS STANDPIPE ADAPTOR

- Quicky converts 65mm female instantaneous down to a controllable 19mm hose tail.



Product code: 06070003

TYPE 2 UNDERGROUND HYDRANT

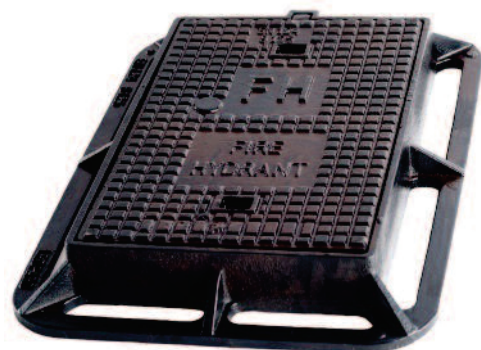
- Inlet flange: DN80 drilled to PN10, PN16, BS EN 1092-2:1997 and BS 10:2009 3" table D & E.
- Push down dust cap, secured by coated steel wire cable.
- External and internal parts: fusion bonded epoxy coated.
- Conforms to BS 750:2012.



Product code: 06020201

HYDRANT CHAMBER & COVER

- Prising points for quick emergency access.
- Conforms to BS 750:2012. grade A.
- Clear opening: 380mm x 230mm.



Product code: 06020202

Brigade Equipment

TYPE 1

- Type 1 is an uncoated jacketed fire hose with an EPDM rubber lining. It comes supplied with 2 1/2" couplings wired on. The hose complies with BS 6391:1983 type 1.

Product codes:

- 38mm x 30m c/w alloy couplings: 24011145**
- 45mm x 23m c/w alloy couplings: 24011144**
- 45mm x 30m c/w alloy couplings: 24011155**
- 65mm x 30m c/w alloy couplings: 24011165**



TYPE 2

- Type 2 is a synthetic jacketed fire hose with a red external abrasion resistant elastomeric coating with an EPDM rubber lining. It comes supplied with 2 1/2" couplings wired on and complies with BS 6391:1983 type 2.

Product codes:

- 45mm x 23m c/w alloy couplings: 24021253**
- 65mm x 23m c/w alloy couplings: 24021163**
- 65mm x 30m c/w alloy couplings: 24021165**



TYPE 3

- Type 3 is an all synthetic jacketed fire hose with a unified lining and cover of a polymer compound covering both sides of a synthetic yarn reinforcement in a single extrusion. It comes supplied with 2 1/2" couplings wired on. It complies to BS 6391:1983 type 3.

Product codes:

- 45mm x 23m c/w alloy couplings: 24031153**
- 45mm x 23m c/w gun metal couplings: 24032153**
- 65mm x 23m c/w alloy couplings: 24031163**
- 65mm x 23m c/w gun metal couplings: 24032163**
- 65mm x 30m c/w alloy couplings: 24031165**





Brigade Equipment

BRANCH PIPE NOZZLE

- Inlet: 2 1/2 " male instantaneous to BS 336.
- Outlet: nozzle sizes 15mm - 30mm.
- Made from aluminium alloy. Also available in bronze.

Product code: 06050010



JET/ SPRAY BRANCHPIPE

- Able to produce a jet or spray depending on lever position.
- Made from aluminium & polymide.
- Inlet: 2 1/2 " male instantaneous to BS 336 or 38 Storz fitting.
- Outlet: Nozzle 9mm.
- Max working pressure 10 bar.

Product code: 06030003



DIFFUSER NOZZLE

- Able to produce a jet or spray by twisting the nozzle.
- Made from aluminium alloy.
- Inlet: 2 1/2 " male instantaneous.
- Max output @ 100psi 640 l/min (jet) 890 l/min (spray).

Product code: 06030002



PISTOL GRIP NOZZLE

- Made from aluminium alloy.
- Inlet 65mm male instantaneous to BS 336.
- Max working pressure 16 bar.
- Output 150 - 750 l/min.

Product code: 06030005



Mounting Brackets

EXTINGUISHER T BRACKET WITH STRAP

Product codes:

For 2kg CO2: 09010301

For 5kg CO2: 09010302

Universal Model (For Powder/Foam): 09010201



POWDER, WATER & FOAM J BRACKETS

Suitable for:

- 4/6/9/12 kg dry powder extinguishers.
- 3/6/9 /ltr water extinguishers.
- 3/6/9/ltr foam extinguishers.

Product code: 09010506



WIRE BRACKETS

- Wire brackets, suitable for small dry powder and foam extinguishers.

Product codes:

For 1kg extinguishers: 09010501

For 2kg extinguishers: 09010502



LUG BRACKETS

- Lug brackets for Co2 extinguishers.

Product codes:

2kg lug bracket: 09010305

5kg lug bracket: 09010306



CO2 T BRACKETS

Product codes:

2kg T bracket: 09010303

5kg T bracket: 09010306





Mounting Brackets

CO2 EXTINGUISHER WIRE BRACKET

- A heavy duty wire bracket suitable for CO2 extinguishers.

Product codes:

For 2KG CO2: 09010309

For 5KG CO2: 09010307



HEAVY DUTY TRANSPORT BRACKET

- A heavy duty metal transport bracket. Easily adjustable.

Product codes:

For 6/9ltr foams & 9kg powders: 09010101

For 4 & 6kg powders: 09010102

For CO2 extinguishers: 09010103



WIRE BRACKET CENTRE STRAP

- A plastic strap that clips onto the wire bracket for extra security.

Product codes:

1kg strap: 09010504

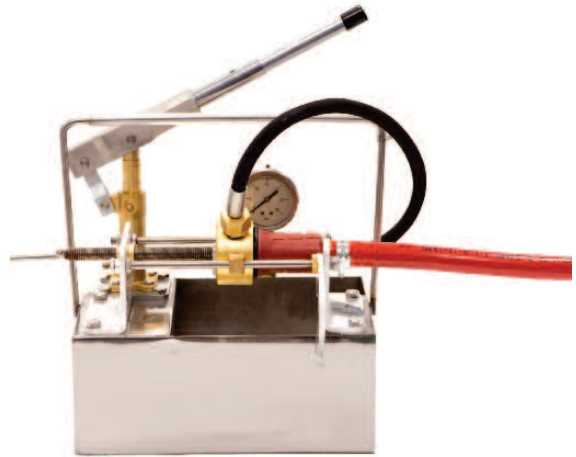
2kg/ 2ltr strap: 09010503



Tools and Maintenance

HOSE REEL TEST PUMP

- The portable hand operated pump is used for the periodic pressure testing of reel hose in accordance with BS EN 671-3: 2009. A built-in nozzle clamp attachment enables the service technician to carry out the test without removing the nozzle.



Product code: 98011002

EXTINGUISHER MASTER GAUGE

- Used to check all fire extinguishers fitted with a schrader type valve. This unit can test the internal pressure accurately. Supplied with both male and female adapters.



Product code: 10010116

NITROGEN REGULATOR, HOSE & ADAPTORS

- A compact high pressure regulator that is of a robust construction to withstand the rigors of daily use.
- Max inlet pressure: 300 Bar
- Outlet Pressure 0-28 Bar



Product code: 98011108



Escape Equipment

KEY BOX

Emergency break glass key boxes are used to store keys securely until needed in the event of an emergency. Highly visible design. Easy to break plastic panel gives immediate access to key. Can also be supplied with hammer & chain.

Product codes:

Key box: 98010601

Hammer & chain: 98010606

Spare glass: 98010602



PANIC BOLT ASSEMBLY

Designed for single emergency door use these panic bolts provide an economical solution to the problem of providing reliable security for internal emergency exits. The door can only be opened by breaking the tube which automatically releases the bolt. Supplied with 2 tubes, padlock and hammer and chain.

Product codes:

Assembly: 98010604

Spare tubes: 98010604



ESCAPE LADDER

Quick and easy to install, this escape ladder is 7m in length making it suitable for 2 and 3 storey buildings. Made from steel with aluminium rungs and polypropylene straps it is strong enough to support up to 500kg in weight. Suitable for window ledge walls of between 250mm -500mm in thickness. Comes with a 5 year limited warranty.

Product code: 98010709



Escape Equipment

ESCAPE HAMMER

An ideal tool for all vehicles. This hammer has two major roles; the steel tipped hammer can be used to shatter windows quickly and easily for a safe and quick exit, whilst the protected razor sharp blade can be used to cut through seat belt straps. Made from tough ABS plastic with a steel, zinc covered blade.



Product code: 98010401

0.6KG D/P EXTINGUISHER

Ideal for cars, caravans and boats this small extinguisher is perfect to be stored in places where space is at a premium.



Product code: 02110060

EVACUATION CHAIR

The evacuation chair offers a simple, safe solution for disabled evacuation via stairways. Weighing only 12kg it is extremely lightweight but highly robust and will carry up to 165kg. Fitted with padded seat and back for comfort. Comes supplied with protective dust cover and wall bracket.



Product code: 07031001

FIRE BUCKET

Red plastic fire bucket. Ideal for garage forecourts, lightweight and will not rust.



Product code: 98010710



Extinguisher Spares

CO2 HORNS

Product codes:
Standard: 23010202
Frost free: 23010203



HOSE & HORN

Product code: 23010205



TAPER THREAD VALVES

Product codes:
MRJ3 valve (2kg E CO2): 15020104
MRJ4 valve (5kg E CO2): 15020102



PARALLEL VALVES

Product codes:
MRJ2 valve (2kg CO2): 15020101
MRJ1 Valve (5kg CO2): 15020103



Audible Alarms

SITE ALARMS

Site Alarm: Ideal for use on building sites or small work units. Provides both an audible warning with its loud 95dB at 1m sounder and a visible warning with its built in strobe light. Quick and easy to install and up to 5 units can be linked together to provide a temporary alarm system.

Product codes:

Push button: 98010501

Break glass: 98010503

Wireless Linkable Site Alarm: Ideal for large sites where more than one alarm needs to be linked. Multi device linkable. 4 different channels available.

Product code: Wireless Linkable Site Alarm 98010504



ROTARY HAND BELL

Suitable for indoor or outdoor use. The bell can provide an audible warning of up to 60dB at 35m. Made from die-cast aluminium offering excellent corrosion protection. Pre-drilled flange makes fitting quick and simple. Can be wall mounted or fitted to the back of forecourt trolley.

Product code: 98010502



EMERGENCY GAS AIR HORN

With its loud 95dB at 1m the emergency gas air horn is perfect for use as a temporary alarm siren. No installation necessary, easy to move and very cost effective. Refill canisters are available.

Product codes:

Air horn: 98010201

Refill cannister: 98010202



EXTINGUISHER ANTI-THEFT ALARM

Designed to stop the theft and misuse of fire extinguishers. This device emits a piercing warning sound if the extinguishers are removed. Fits easily to walls or the inside of extinguisher cabinets.

Product code: 98010801





Audible Alarms

MEGAPHONES

Two versions of the megaphone are available. The standard version has a folding handle for easy storage, a built-in microphone and an adjustable volume control. It also has a built-in alarm function. Max output 10/15w. The large version has a removable microphone with a talk or siren mode. It also has an adjustable volume control and a removable strap. Max' output 45/50w.

Product codes:

Standard: 98010708

Large: 98010707



PHOTOELECTRIC SMOKE ALARM

Operated with a single 9v battery, this easily mounted smoke alarm provides an early warning in the event of a fire by sounding an extra loud alarm at over 85dB. With its environmentally friendly non-radioactive technology, self test and hush features this alarm is perfect for home use.

Product code: 22351002



CARBON MONOXIDE ALARM

Operated with a single 9v battery, this carbon monoxide detector provides an early warning in the event of CO build up by sounding an extra loud alarm at over 85dB. Featuring a test/hush button and a low or missing battery indicator, this carbon monoxide detector is perfect for home or caravan use.

Product code: 22351001



Safety Ancillaries

FIRST AID KITS

Complying with current HSE regulations these first aid kits are suitable for any incident.

Product codes:

1-10 Person: 07000101

11-25 Person: 07000103

26-50 Person: 07000105



ABSORBENT FOR LIQUID SPILLAGES

With its very high absorbency of liquids, oils, paints, acids and chemicals this is an ideal way to deal with unexpected spillages.

Product code: 08010110



First Aid Kit





Emergency Lighting

8W EXIT SIGN

The ES light is a general purpose, cost effective wall mounted emergency escape route sign. Comprising a white stove enamelled, zintec-coated sheet steel base and fitted with a self-extinguishing legend panel.

It conforms to the 850°C hot-wire test as defined by ICEL. The ES light has cable knockouts in the top and sides, complying with the requirements of EN 60598-2-2:2012. The ES light is also suitable for incorporation in an emergency lighting system complying with BS 5266-1:2011. The ES can be fitted with legends complying with the Health and Safety signs directive of 1996 while for extensions a full range of BS 5499 legends remain available. Available in a number of finishes. Switchable, maintained, non-maintained, sustained and double sided versions are available.



Product code: 22157002

8W BULKHEAD

The CS light is a general purpose, low cost emergency luminaire, moulded in self-extinguishing polycarbonate, and fitted with a clear Fresnel diffuser. The CS light is for use on escape routes.

It passes the 850°C hot-wire test as defined by ICEL. The diffuser is attached by captive screws and has a gasket to provide a seal to IP65. Cable entries are provided in either end with a BESA entry in the base, complying with EN 60598-2-2:2012 and making the CS light suitable for use in an emergency light system complying with BS 5266-1:2011. Switchable, maintained and non-maintained versions are available.



Product code: 22157001

TWIN SPOT LIGHT

The TSE light provides cost-effective emergency lighting for large open areas. Comprising a white, finished steel enclosure fitted with twin tungsten halogen flood lights, the TSE is designed for use on escape routes.

It passes the 850°C hot-wire test as defined by the ICEL. Three knockouts on the top and sides of the unit provide flexibility of cabling. Complying with the requirements of EN 60598-2-2:2012 the TSE light is suitable for incorporation into an emergency light system complying with BS 5266-1:2011. The TSE light comes complete with lamps and batteries. Non-maintained as standard but maintained and portable versions are available.



Product code: 22157003

M&E SUPPLIES

For the full range
of products please
scan the QR Code

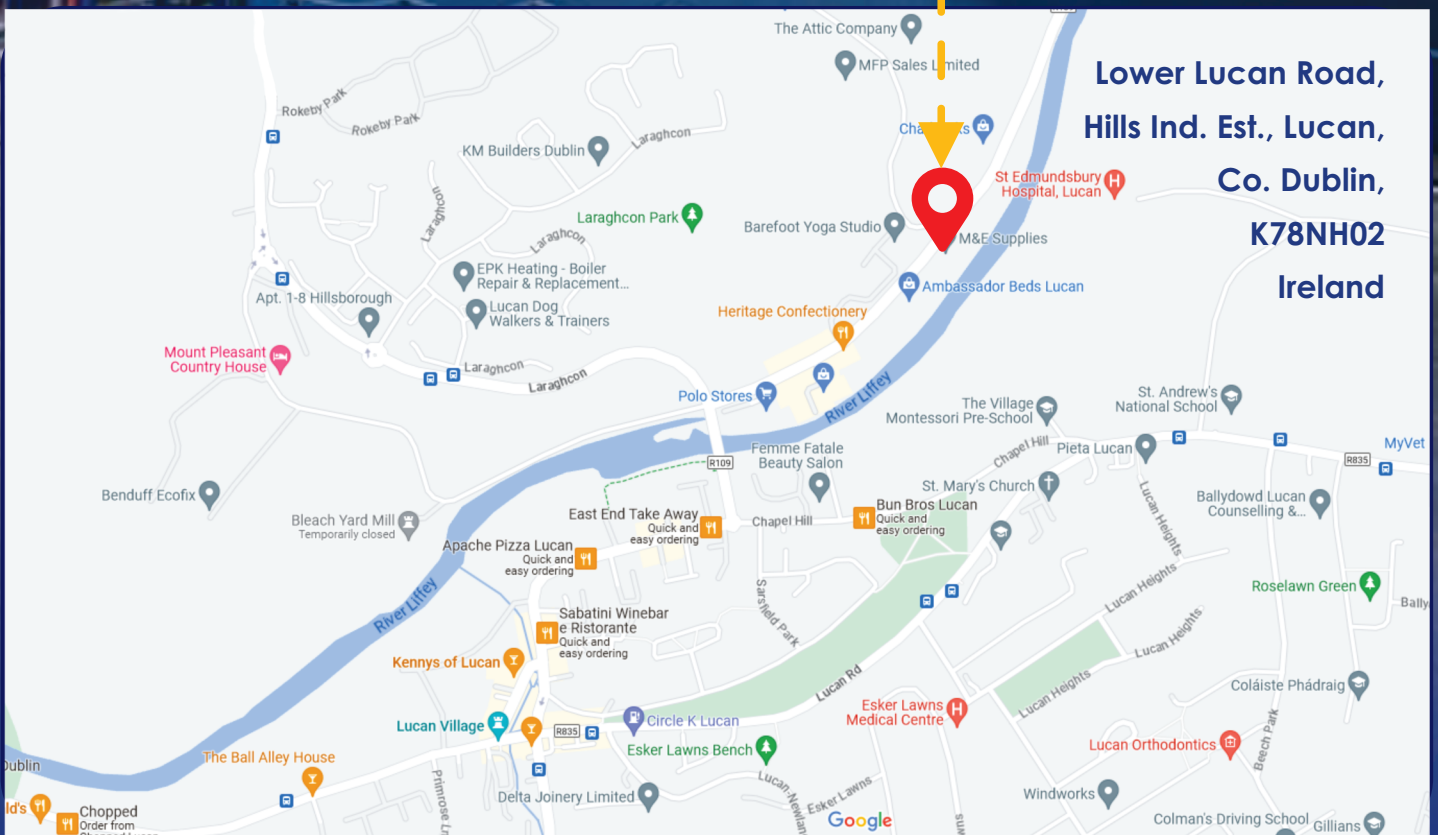


www.mesupplies.com

+353 (0)1 6283888 | Tiernach 0863212915 | Robert 0863760011 | Niall 0861234074

sales@mesupplies.com

We are here - - - - -



Lower Lucan Road,
Hills Ind. Est., Lucan,
Co. Dublin,
K78NH02
Ireland



Health & Safety Signs



Road Signs



Construction
Site Supplies



Traffic Management &
Road Safety Equipment



First Aid Supplies



P.P.E.



Drain Equipment



Road Sweeping Brushes